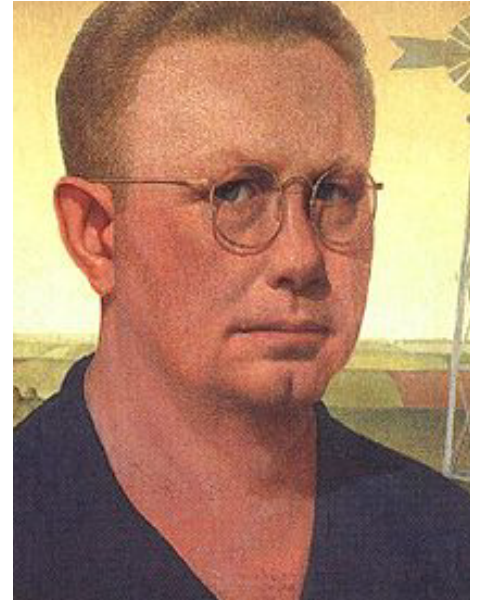
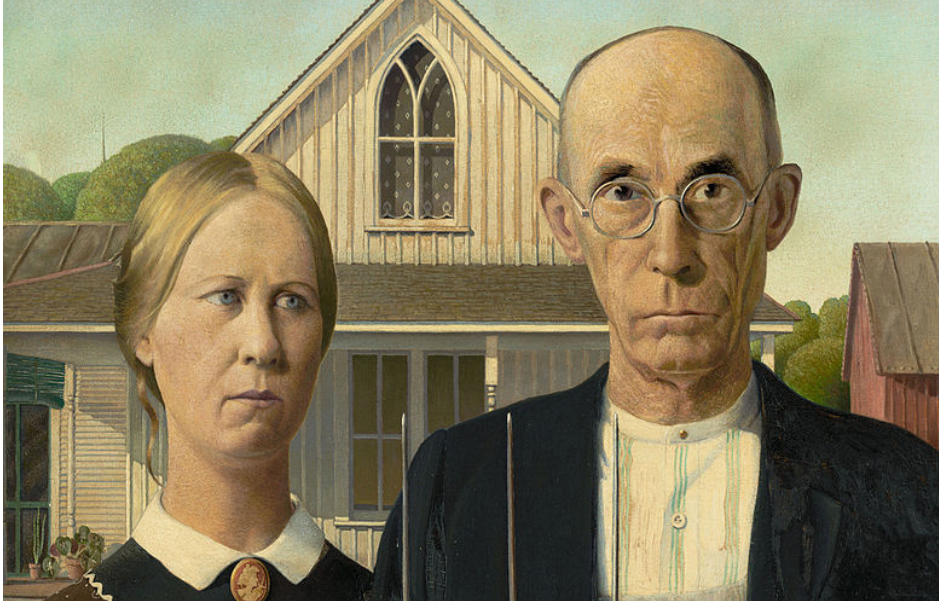


GRANT WOOD

1892 - 1942



American Artist

Grant DeVolson Wood is an American artist who began working impressionistic but then developed a style in American Gothic. Influenced by the realism of the Netherlands, he was best known for depicting the rural American Midwest.

His works are iconic examples of the 20th-century American art and included oil painting, lithographs, ink, charcoal, ceramics, metal, wood and found objects. His work was published in the Associated American Artists in New York for some years.

Periods

American Gothic, Realism, Regionalism, Impressionism, Post-Impressionism

Influences

Jan van Eyck

Famous Works

- American Gothic (1930)
- Partson Weem's Fable (1939)
- Daughters of Revolution (1932)
- Spring in Town (1941)
- Stone City Iowa (1930)
- Young Corn (1931)
- Woman with Plants (1929)
- Arbor Day (1932)
- Fall Plowing (1931)
- Portrait of Nan (1933)
- Appraisal (1931)