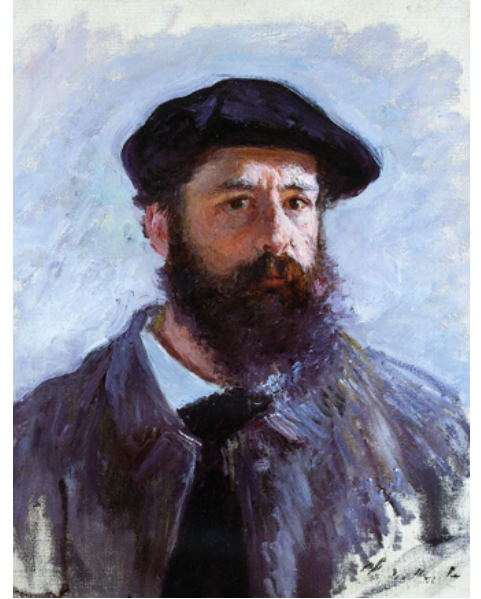


CLAUDE MONET

1840 - 1926



French Artist

Claude Monet was the founder of French Impressionist painting and is foremost known for his Plein-air landscape paintings.

He and other impressionist artists encountered rejection from the conservative ranks of the current art scene until the Anonymous Society of Painters, Sculptors, and Engravers was organised.

The first impressionist exhibition was held in 1874, Paris. In 2004 the painting "London, the Parliament, Effects of Sun in the Fog" was sold for US\$20.1 million. And only shortly after the "Le Bassin Aux Nymphéas" painting was sold at Christie's in London of 2008 for US\$71 Million and was one of the top 20 highest prices ever paid for a painting.

Periods

French Impressionism

Influences

J.M.W. Turner, Camille Pissarro, Edouard Manet, Auguste Renoir, Alfred Sisley

Famous Works

- Poppies (1873)
- Impression Sunrise (1872)
- Women with a Parasol (1875)
- Water Lilies Series (1906-1915)
- Camille Monet on Garden Bench (1873)
- Coquelicots, La Promenade (1873)
- Argenteuil, (1874)
- The Studio Boat (1874)
- Springtime (1872)